

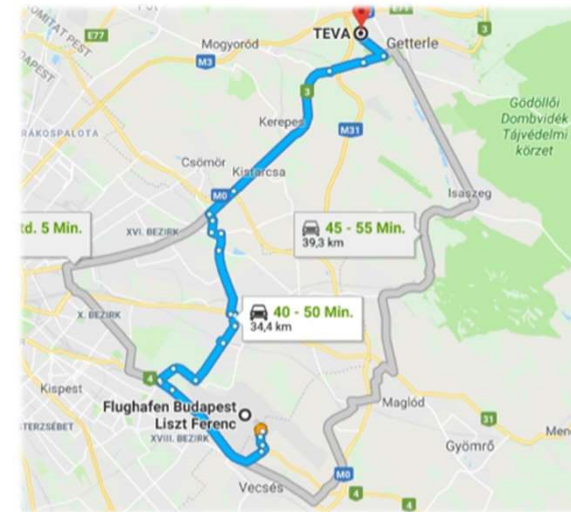
GAS TURBINES

LOCATION: TÁNCICS MIHÁLY ÚT 82
2100 GÖDÖLLŐ
HUNGARY

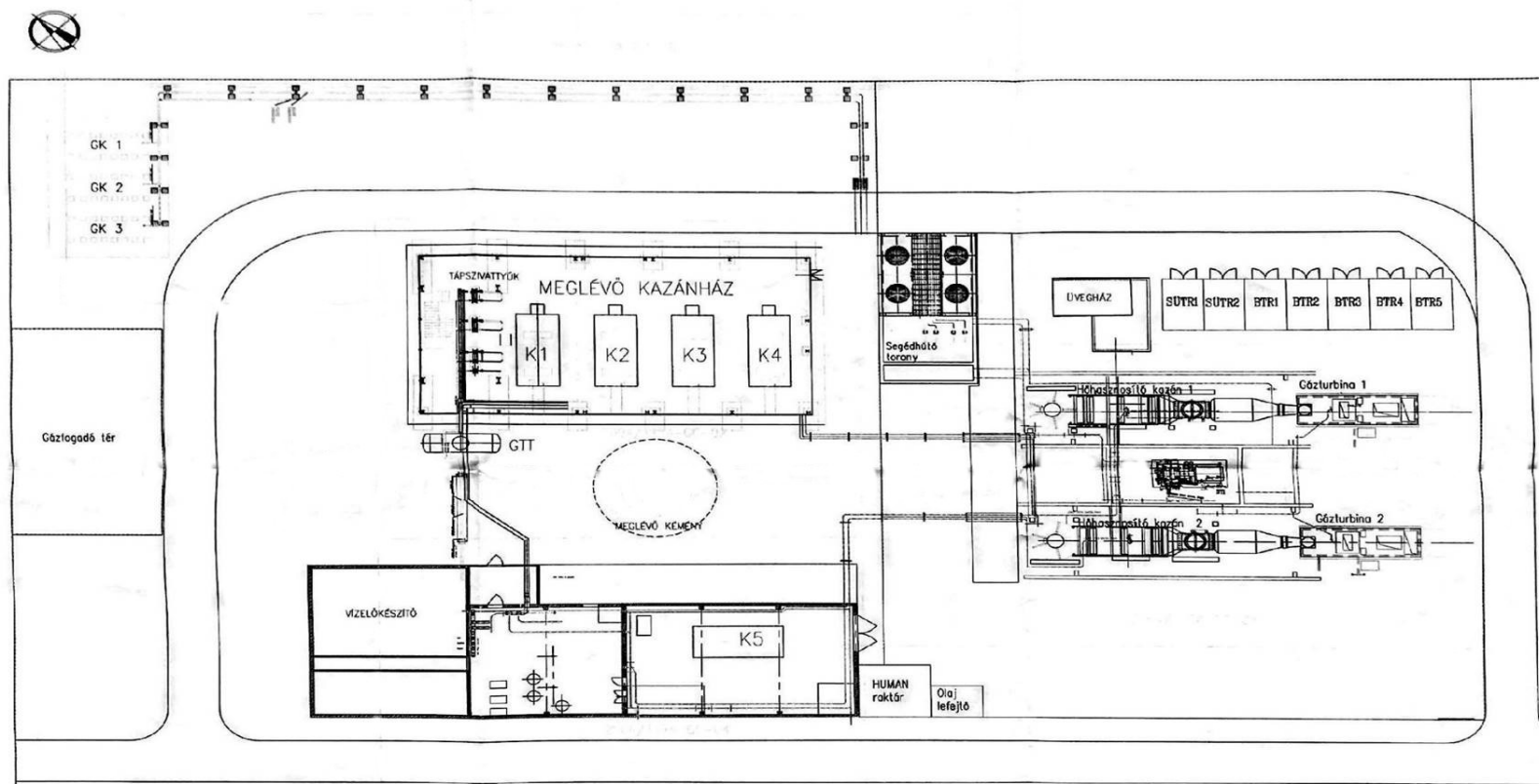


Location

- Located in H-2100 Gödöllő, Táncsics Mihály út 82
- Approx. 35 km from Budapest Airport



Project overview



Asset list

- Gas turbines, CENTRAX 501 KB7, 2 pcs.
- Screw compressor liquid cooler for gas turbine intake air cooling, McQuay, 1 pc.
- Gas turbine exhaust gas / steam heat exchanger, Babcock WANSON, 2 pcs.
- Steam turbine, Peter Brotherhood, 1 pc.
- Absorption chiller, LG, LWM/060, 1 pc.
- Cooling tower for absorption chiller, EVAPCO AT 28/921, 1 pc.
- Piston gas compressor, ABC1EHP111GT/230, 2 pcs.
- Screw compressor, AtlasCopco, GA 7-8 PS/30, 1 pc.



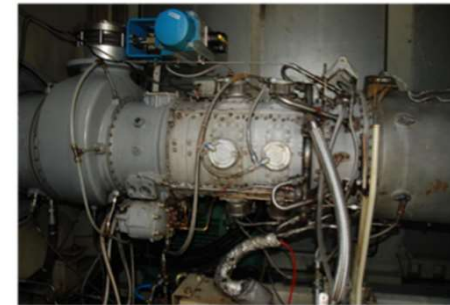
Gas turbine

CENTRAX 501 KB7, 2 pieces

Technical parameters:

- Intake energy: 16 609 kW
- Gas consumption: 1 759 nm³/h
- Electrical output: 5 098 MW
- Electrical efficiency: 30,7%
- Heat: 9 269 kW
- Thermal efficiency: 56%
- Exhaust gas massflow 20,5 kg/s
- Exhaust gas temperature 504°C
- Emission at 15% O₂:
 - NO_x 100 mg/nm³
 - CO 100 mg/nm³

Turbine 1 operable, Turbine 2 repairs required. Details on request.



Screw compressor liquid cooler for gas turbine intake air cooling McQuay

Technical parameters:

- Cooling capacity: 1899 kW
- In air flow: 86 400 Nm³
- In air temperatures: 35/15°C
- Cooling agent temperatures: 7/12 C0
- Cooling agent mass flow: 144 t/h
- Cooling system puffer tank capacity: 10 m³
- Electrical power: 367 kW



Gas turbine exhaust gas / steam heat exchanger

Babcock WANSON (HRSG), 2 pieces

Technical parameters:

- Steam productions: 10,5 t/h
- Pressure: 12 bar (g)
- Output: saturated steam
- Intake exhaust gas temperature: 504°C
- Outlet exhaust gas temperature: 164°C



Steam turbine

Peter Brotherhood

Technical parameters:

- Electrical capacity: 900 KW
- Inlet steam pressure: 11 bar, saturated steam
- Outlet steam pressure: 0,11 bar
- Condensator cooling water flow: 402 m³/h
- Cooling water temperature in/out: 30/38°C
- Electrical connection:
 - 22/3,3 KV block transformer
 - 2 MVA capacity

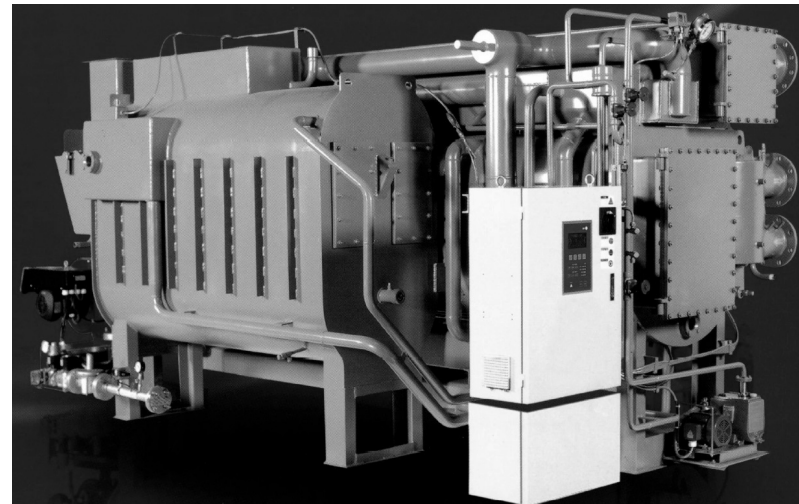


Absorption chiller

LG, LWM/060

Technical parameters:

- Cooling capacity: 2000 kW
- Cooling water temperatures 5/11°C
- Cooling water mass flow: 286,6 t/h
- Heating water mass flow: 125,6 m³/h
- Heating water temperatures: 95/76°C
- Cooling water mass flow: 821,2 m³/h
- Cooling water temperatures: 27/3°C
- Maximum electrical capacity: 6,5 kW



Cooling tower for absorption chiller EVAPCO AT 28/921

Technical parameters:

- Cooling water temperatures 32/27°C
- Cooling water mass flow: 148 l/s
- Air mass flow 54 m³/s



Piston gas compressor

ABC1EHP111GT/230, 2 pieces

Technical parameters:

- Number of pistons: 1
- Inlet pressure: 4,5-6 bar
- Outlet pressure: 20-21 bar
- Gas flow: 2500 Nm³/h
- Electricity consumption: 164 kW
- Compressor revolution: 500 l/min
- Puffer tank capacity 10 m³



Screw compressor

AtlasCopco, GA 7-8 PS/30

Technical parameters:

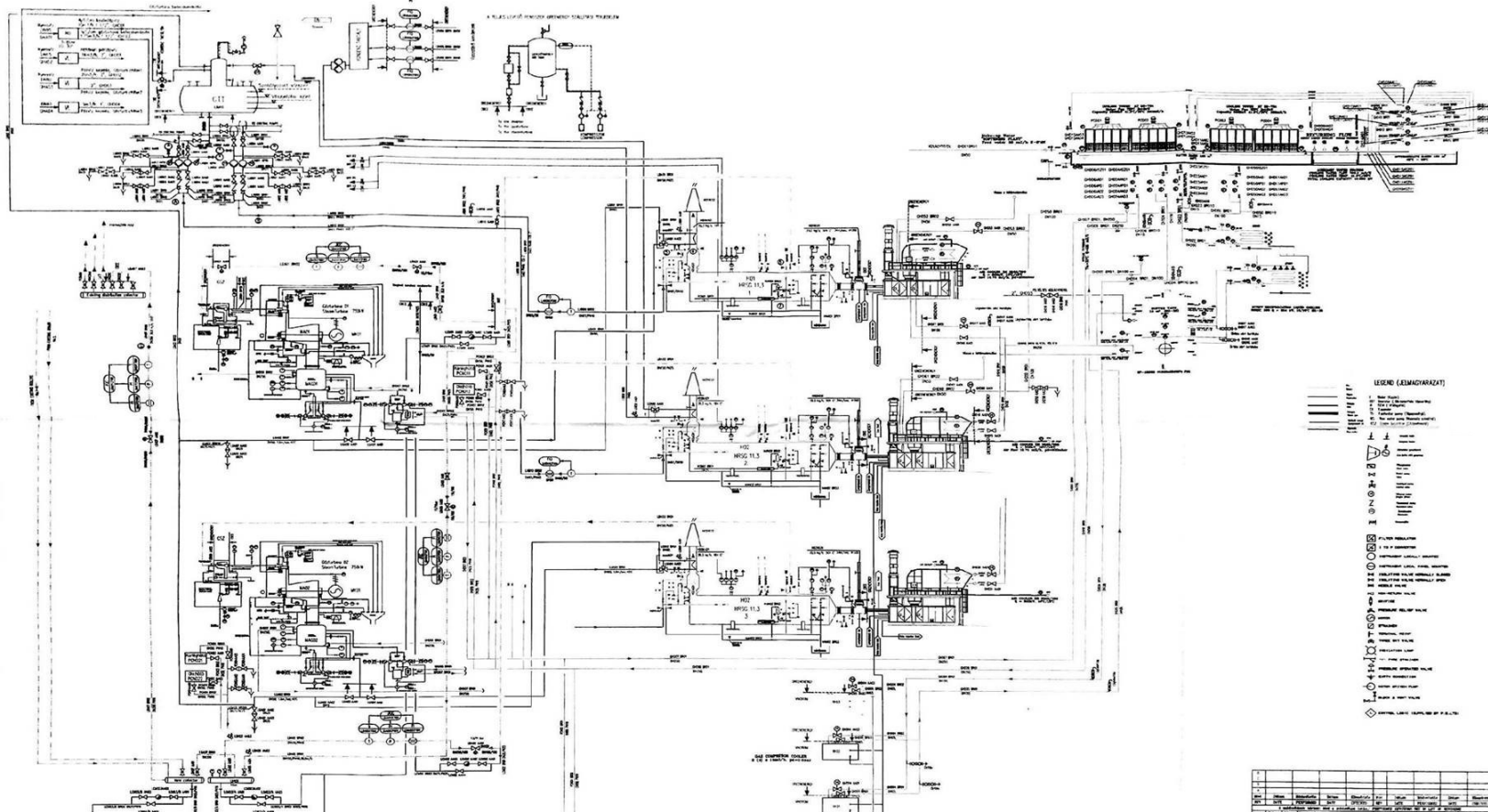
- Maximum pressure: 8,5 bar
- Electric consumption: 7,5 kW
- Air tank volume: 300 l



Water treatment plant



Flowchart



If you require any further information, please contact:

Aron Magyari
Country Manager Hungary
Tel.: +36 302748 744
or
+43 676 483 8091
magyari@netbid.com

Joachim Mink
Project manager
Tel.: +49 172 755 65 76
mink@netbid.com





NetBid GmbH Austria

**Bräuhausgasse 37
A-1050 Vienna, Austria**

Phone: (43) 01 890 66 70
info@netbid.com

www.netbid.com